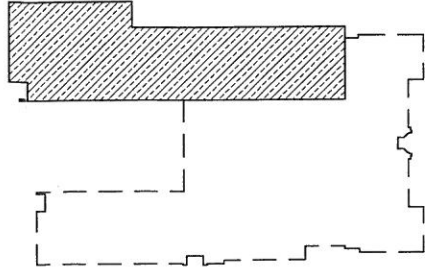


**SECOND FLOOR**

~~BASEMENT PLAN~~

SCALE: 1" = 20'-0"



KEY PLAN

NTS

THOMAS  
PORTER  
ARCHITECTS



Architecture  
Interiors  
Planning

830 N. SUMMIT STREET  
TOLEDO, OHIO 43604

419.243.2400 P | 419.243.2405 F

- ORIGINAL CONSTRUCTION  
1927 AREA: 16,651 SF
- CLASSROOM ADDITION  
1946 AREA: 12,027 SF
- CLASSROOM ADDITION  
1950 AREA: 1,364 SF
- CLASSROOM ADDITION  
1956 AREA: 7,564 SF
- CORRIDORS
- GYMNASIUM
- KITCHEN
- STUDENT DINING
- MEDIA CENTER

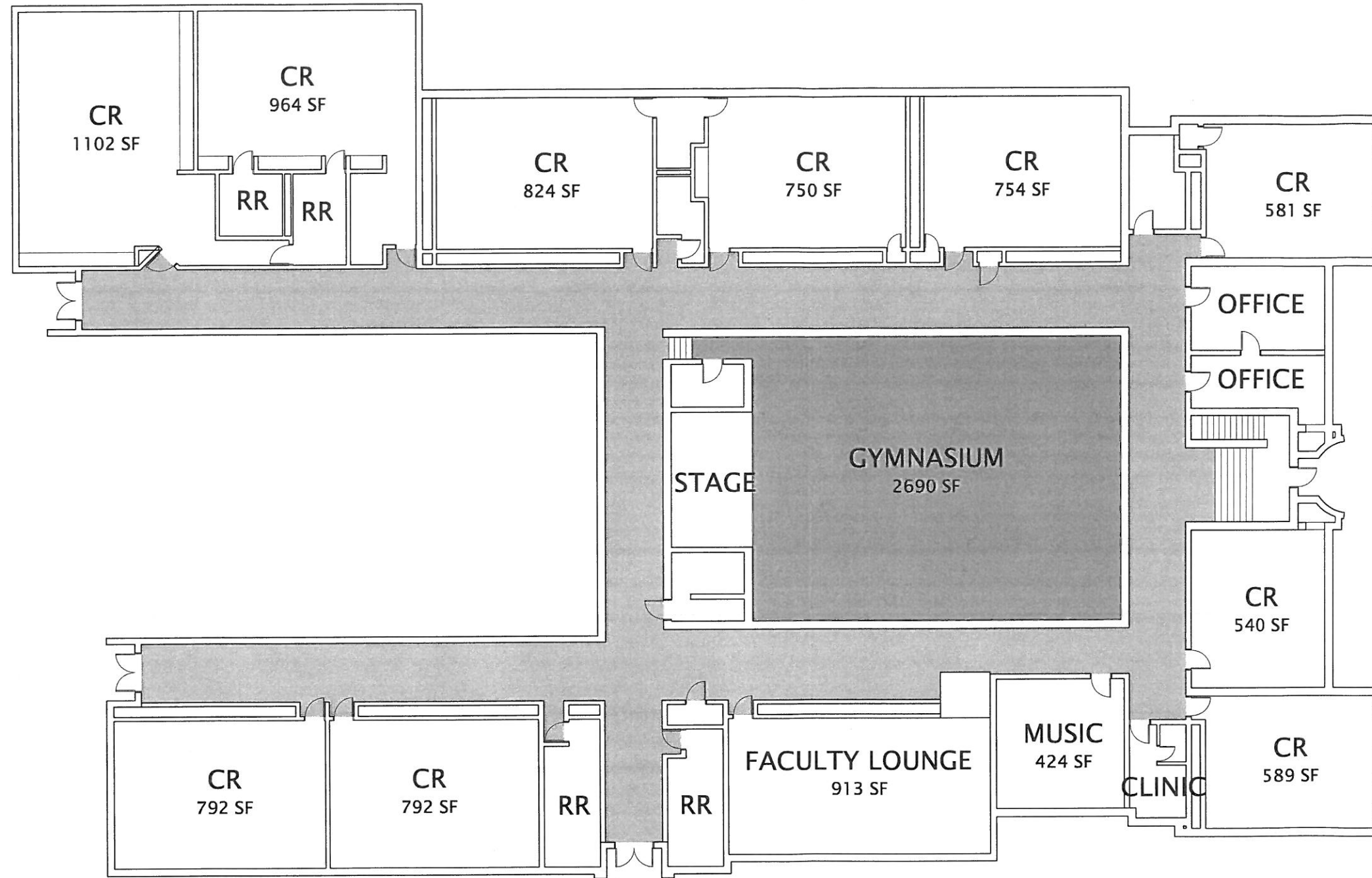
**SILVER LAKE ELEMENTARY SCHOOL**

CUYAHOGA FALLS LOCAL SCHOOLS  
OHIO SCHOOLS FACILITY COMMISSION

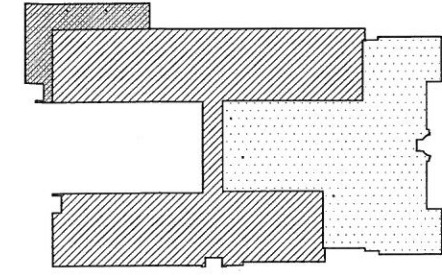
ASSESSMENT DATE: JULY 2009	CONSTRUCTION DATES: 1927, 1946, 1950, 1956
GRADE CONFIGURATION: K-5	EXISTING BUILDING AREA: 37,606 SF
CURRENT ENROLLMENT: 251	SQUARE FOOTAGE PER STUDENT: 149.82
ACREAGE: 7.5	

SHEET NUMBER

**3 OF 5**



**FIRST FLOOR PLAN**  
SCALE: 1" = 20'-0"



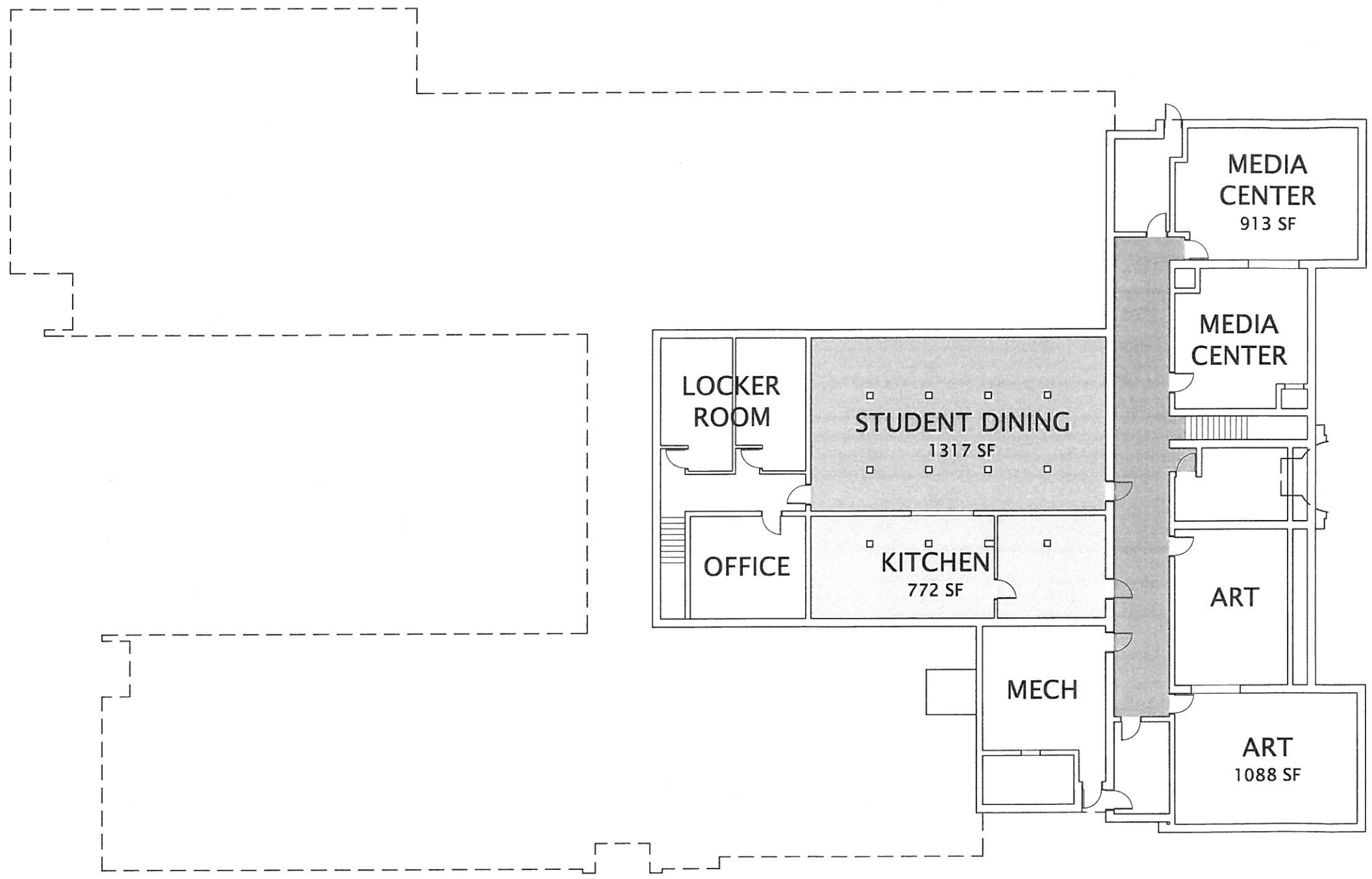
**KEY PLAN**  
NTS



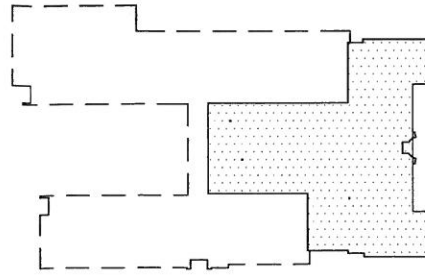
	ORIGINAL CONSTRUCTION 1927 AREA: 16,651 SF
	CLASSROOM ADDITION 1946 AREA: 12,027 SF
	CLASSROOM ADDITION 1950 AREA: 1,364 SF
	CLASSROOM ADDITION 1956 AREA: 7,564 SF
	CORRIDORS
	GYMNASIUM
	KITCHEN
	STUDENT DINING
	MEDIA CENTER

**SILVER LAKE ELEMENTARY SCHOOL**  
CUYAHOGA FALLS LOCAL SCHOOLS  
OHIO SCHOOLS FACILITY COMMISSION

ASSESSMENT DATE: JULY 2009	CONSTRUCTION DATES: 1927, 1946, 1950, 1956
GRADE CONFIGURATION: K-5	EXISTING BUILDING AREA: 37,606 SF
CURRENT ENROLLMENT: 251	SQUARE FOOTAGE PER STUDENT: 149.82
ACREAGE: 7.5	



**LOWER LEVEL**  
~~SECOND FLOOR PLAN~~  
 SCALE: 1" = 20'-0"



KEY PLAN  
 NTS

THOMAS  
 PORTER  
 ARCHITECTS



Architecture  
 Interiors  
 Planning

830 N. SUMMIT STREET  
 TOLEDO, OHIO 43604  
 419.243.2400 P | 419.243.2405 F

	ORIGINAL CONSTRUCTION 1927 AREA: 16,651 SF
	CLASSROOM ADDITION 1946 AREA: 12,027 SF
	CLASSROOM ADDITION 1950 AREA: 1,364 SF
	CLASSROOM ADDITION 1956 AREA: 7,564 SF
	CORRIDORS
	GYMNASIUM
	KITCHEN
	STUDENT DINING
	MEDIA CENTER

**SILVER LAKE ELEMENTARY SCHOOL**

CUYAHOGA FALLS LOCAL SCHOOLS  
 OHIO SCHOOLS FACILITY COMMISSION

ASSESSMENT DATE: JULY 2009	CONSTRUCTION DATES: 1927, 1946, 1950, 1956
GRADE CONFIGURATION: K-5	EXISTING BUILDING AREA: 37,606 SF
CURRENT ENROLLMENT: 251	SQUARE FOOTAGE PER STUDENT: 149.82
ACREAGE: 7.5	

SHEET NUMBER  
**5 OF 5**